



Australian Hammer Supplies Hire
Unit 3/32 Williamson Road
Ingleburn
NSW 2565

Minor Service

RP043250

Customer AUSTRALIAN HAMMER SUPPLIES HIRE Resource Reid Lewis

Contact

Address	AUSTRALIAN HAMMER SUPPLIES HIRE Unit 3/32 WILLIAMSON RD INGLEBURN 2565	Job Type Reference Date	Minor Service 2024-09-16 13:33 - 15:11
		Job duration Driving duration Distance travelled	2:0:00 00:00:00 0 km

Notes MINOR SERVICE 250HR - Send report to Cono

Customer/Technician

Resource notes

Minor Service

Answer

Notes

Additional notes	n
Change fuel filter	yes
Change gear oil (litres used)	5
Change oil filter	yes
Change outer air filter	yes
Check hand controls operational	Yes
Check slew (full travel and smooth operation)	Yes
Check the hydraulic motor and the control block for oil leaks.	Yes
Foot pedals (operate correctly)	Yes
Gauges (operate correctly)	Yes



Australian Hammer Supplies Hire
Unit 3/32 Williamson Road
Ingleburn
NSW 2565

General check/adjust driver belts	Yes
General inspections/safety checks	good
General inspections/safety checks	good
Grease & Lubricate Pins & bushes	Yes
Grease all nipples	yes
Hand controls (operate correctly)	Yes
Handbrake (functional)	na
Inspect track tension	good
Inspect/top up coolant (litres used)	0
Meter Reading	256
Operational inspection controls and safety locks Air conditioner/heater	Yes
Operational inspection controls and safety locks Attachment controls	Yes
Operational inspection controls and safety locks Battery charger rate	Yes
Operational inspection controls and safety locks Engine shut off	Yes
Operational inspection controls and safety locks Engine speed high	Yes
Operational inspection controls and safety locks Engine speed low idle	Yes
Operational inspection controls and safety locks E-STOPS	Yes
Operational inspection controls and safety locks Flow test hyd system(Ref. WSM)	Yes
Operational inspection controls and safety locks Horn hazard & warning devices	Yes
Operational inspection controls and safety locks Hour & tachometer	Yes
Operational inspection controls and safety locks Hydraulic auxiliary operation	Yes
Operational inspection controls and safety locks Instruments & Gauges	Yes
Operational inspection controls and safety locks Lights - Interior	Yes
Operational inspection controls and safety locks- Lights head,signal, stop & work	Yes
Operational inspection controls and safety locks Lights-warning	Yes
Operational inspection controls and safety locks	Yes



Australian Hammer Supplies Hire
Unit 3/32 Williamson Road
Ingleburn
NSW 2565

Main relief pressure check: PSI =

Operational inspection controls and safety locks No Yes
coolant leaks

Operational inspection controls and safety locks No Yes
exhaust leaks

Operational inspection controls and safety locks No Yes
fuel system leaks

Operational inspection controls and safety locks No Yes
oil leaks

Operational inspection controls and safety locks Yes
Quick hitch

Operational inspection controls and safety locks Yes
Safety interlock function

Operational inspection controls and safety locks Yes
Seat belt operation & mounting

Operational inspection controls and safety locks Yes
Set clock & audio system

Operational inspection controls and safety locks Yes
Set service intervals

Operational inspection controls and safety locks- Yes
Switches & controls

Operational inspection controls and safety locks Yes
Verify relief valve setting (attach)

Operational inspection controls and safety locks Yes
Windscreen wipers & washers

Pre cleaner, cabin filter and outer air filter take out N/A
and blow out - Actioned?

Tracks check/adjust track tension Yes



Australian Hammer Supplies Hire
Unit 3/32 Williamson Road
Ingleburn
NSW 2565

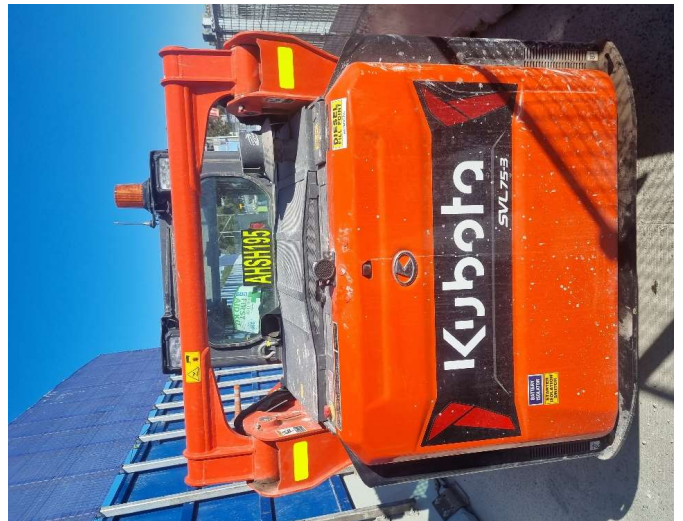
Plant No.



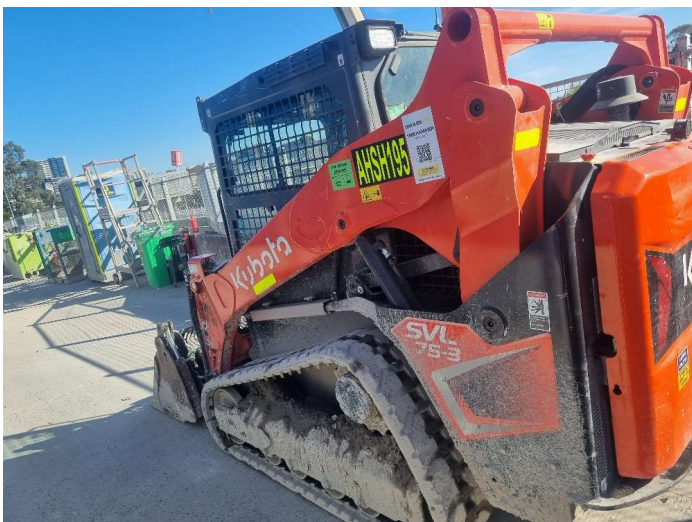
Overall View - Right hand side



Tyre Condition 1



Tyre Condition 2



Tyre Condition 3





Australian Hammer Supplies Hire
Unit 3/32 Williamson Road
Ingleburn
NSW 2565

Tyre Condition 4

